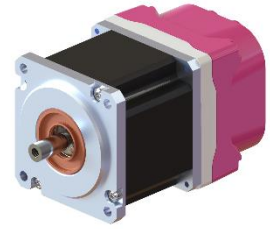


iND60

Double Encoder, No Brake, Integrated Drive

Product number:
1L057X055NBXID

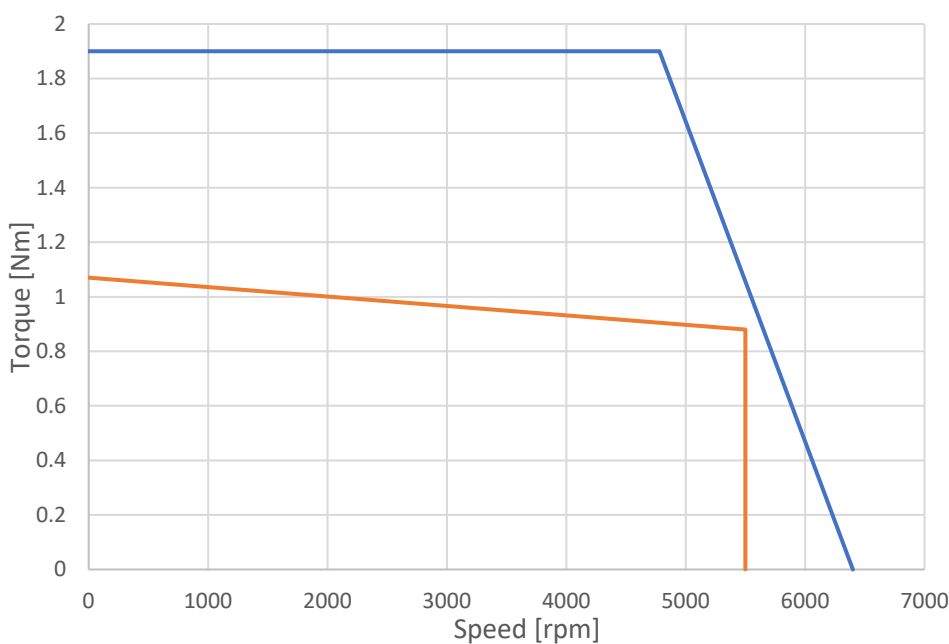


MOTOR SPECIFICATIONS

Characteristic	Abbr.	Unit	Value
Motor technology			SPM
No of poles			10
Rated Voltage	U_{mot}	V_{rms}	48
S1 Rated speed	n_n	rpm	5500
Maximum speed	n_{max}	rpm	6400
Rated power	P_n	W	507
Stall torque	M_0	Nm	1.07
S1 Rated torque	M_n	Nm	0.88
Peak torque	M_{max}	Nm	1.9
Stall current	I_0	A_{rms}	17
S1 Rated current	I_n	A_{rms}	15
Peak current	I_{max}	A_{rms}	27

Characteristic	Abbr.	Unit	Value
Torque constant (hot)	kt_{hot}	Nm/A_{rms}	0.059
Torque constant (cold)	kt_{cold}	Nm/A_{rms}	0.070
Voltage constant	ke	$V/krpm$	4.9
Winding resistance	R_{p-p}	Ω	0.21
Winding inductance	L_{p-p}	mH	0.33
Max ambient operating temperature			40°C
Insulation class			F – 155°C
Thermal Protection			KTY-84

Motor Speed-Torque diagram - 48VDC

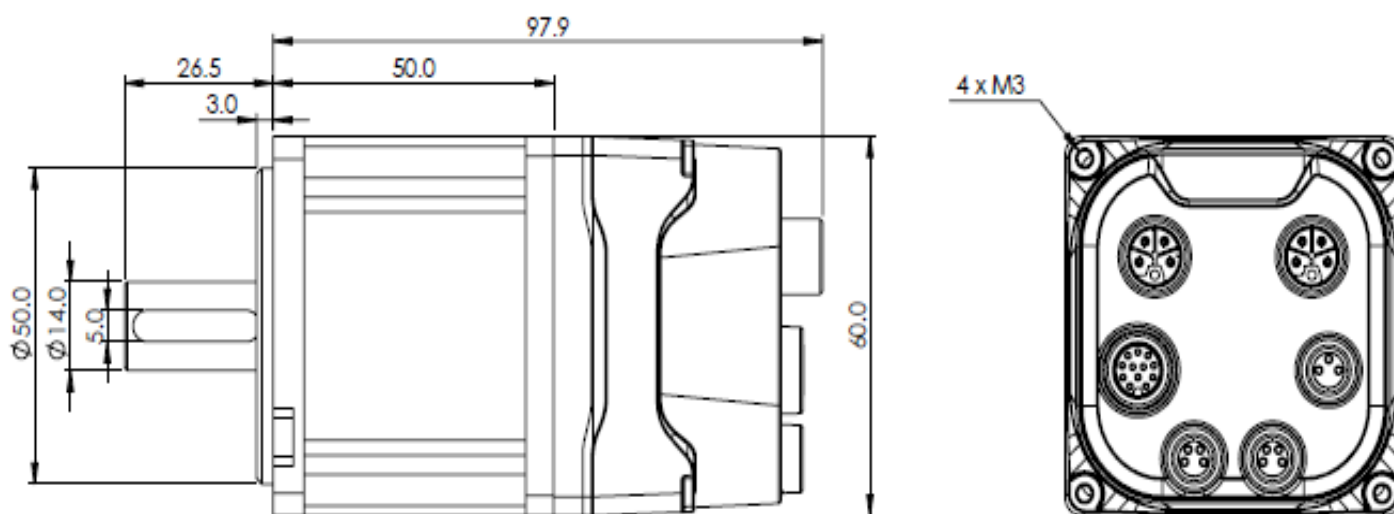


— Intermittent: Motor performances at cold (25°C), held for no longer than 3 seconds.

— Continuous: performances the motor can run continuously



MOTOR DIMENSIONS



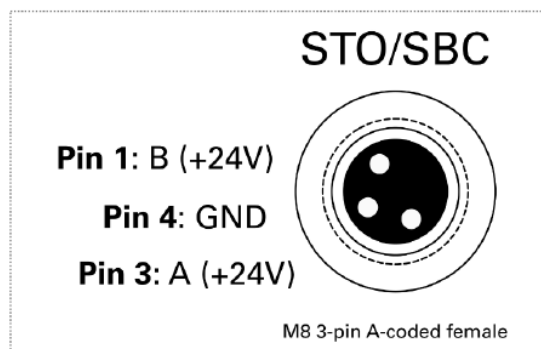
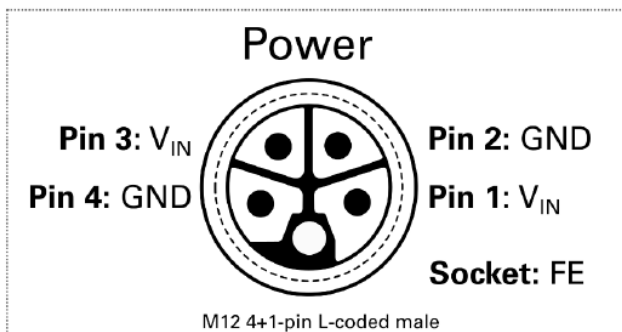
INTEGRATED DRIVE

Model: Integro

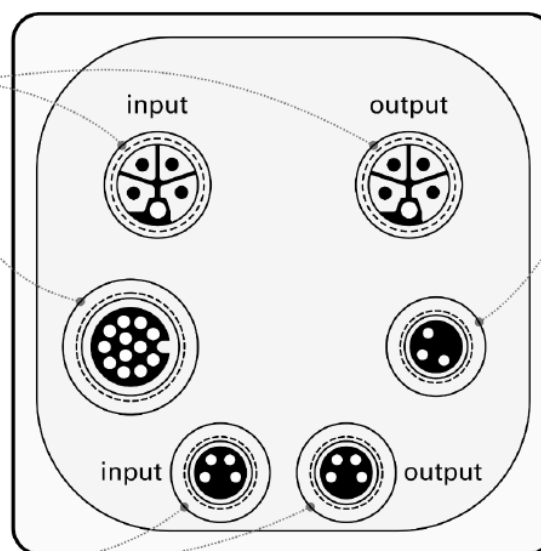
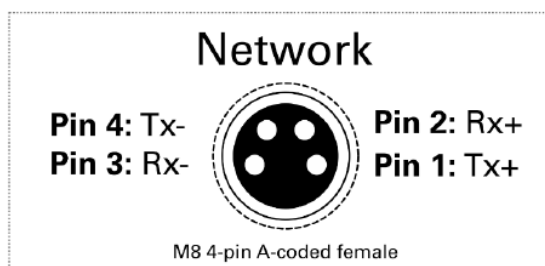
Drive Technical Specifications: <https://www.synapticon.com/en/products/somanet-integro>

FEEDBACK SPECIFICATIONS

Characteristic	Value
Manufacturer	Renishaw RLS
Type	Double incremental encoder with Commutation signals
Resolution	12 bit; 4096 ppr
Hysteresis	0.18°
Accuracy	±0.5°
Supply voltage	5 V _{DC}
Current Consumption	13 mA to 50 mA



I/O Connector
see breakout table
M12 12-pin A-coding female



NOTE: 1) The data provided in this datasheet is for guidance only and does not form part of any contract. 2) Motor, drive, gearbox and brake should undergo application testing to validate performance.