



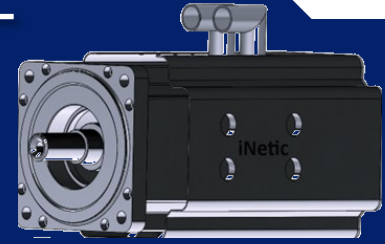
Data Sheet



SERVO Motor

3F135X015FIIXA

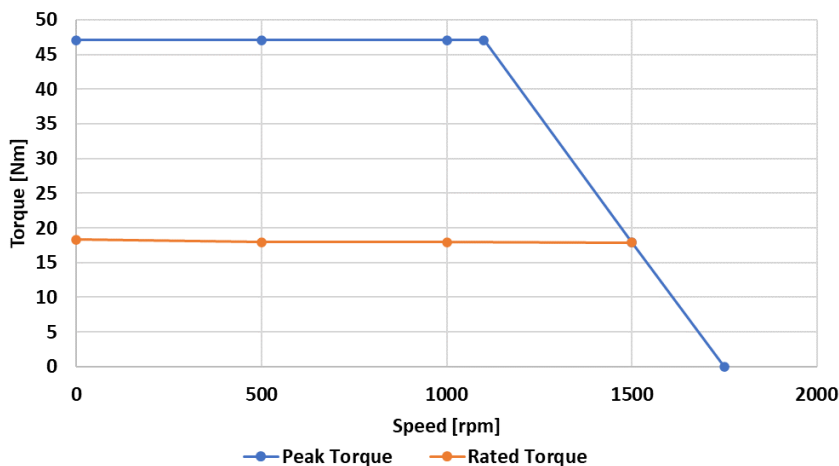
380/480 V



Specification

eMotor Technology	IPM
Outer Frame Size [mm]	140
Cooling Strategy	Fan Cooled
Rated Speed [rpm]	1500
Number of pole pairs	4
Wiring of the motor Winding	Y
Rated voltage motor [V rms]	400
Drive Input DC Bus Voltage [Vdc]	380-480
Rated power [kW]	2.9
Rated torque [Nm]	18.5
Rated current per phase [Arms]	5.3
Stall torque [Nm]	19.5
Stall current per phase [Arms]	5.9
Peak torque [Nm]	49
Peak current [Arms]	15.3
Maximum speed [rpm]	1500
Voltage constant at 1000 rpm [Vrms]	196
Torque constant [Nm/Arms]	3.2
Winding resistance (line_line) @ 20°C [Ω]	4
Winding inductance (line_line) [mH]	33.3
Thermal time constant [min]	3.1
Standard inertia rotor [kg-cm ²]	30~
Weight of motor [kg]	17
Motor Ambient Temperature [°C]	40
Temperature Sensor	KTY-84
Feedback System	Resolver
Winding Insulation [Class]	F
Fan Voltage [Vac]	230
Fan Box Current Rating [A]	0.05(min) : 0.07(nominal) : 0.13 (max)

Performance



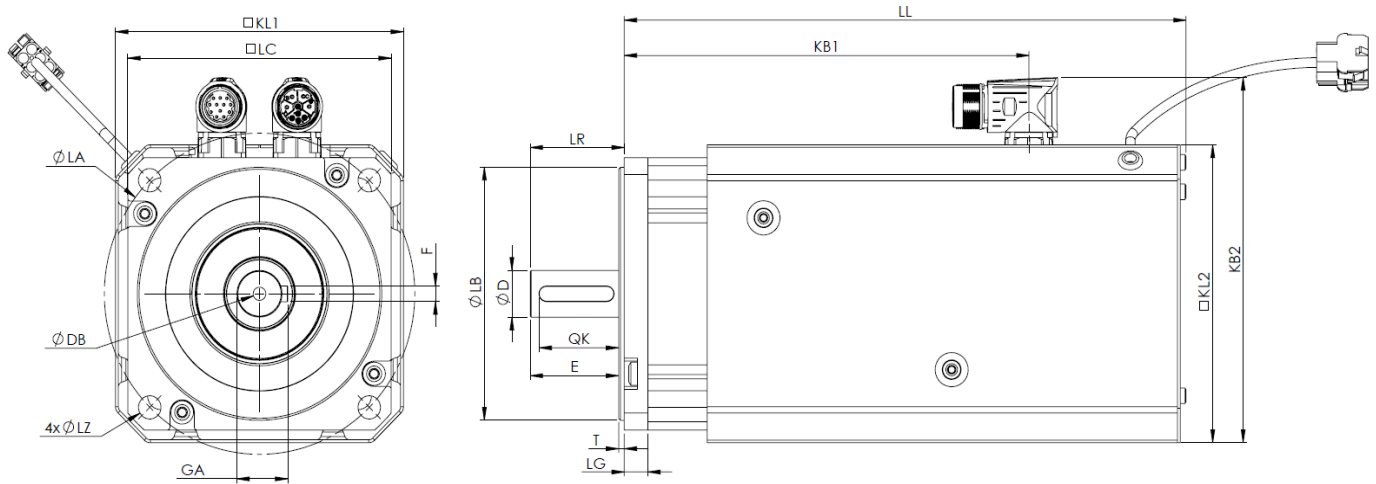
* Rated performance is 100°C above ambient

* Kt, Ke values are defined for 20°C





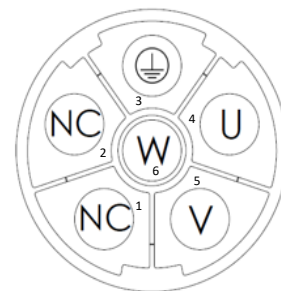
Dimensions



FOR MOTOR DIMENSIONS (mm)									SHAFT EXTENSION					WITH FAN-BOX						
SHAFT LENGTH	SEGMENT LENGTH	LC	LA	LZ	LB	LR	T	LG	D	DB	E	QK	GA	F	LL	KB1	KB2	KL1	KL2	
70	3U	140	165	12	130	50	3	12.5	24	M8	47	42.2	27	8	298.6	215.1	187.6	153	153	

Resolver/Fan-box Connection

Feedback device code: AE - Resolver (Size 52)		
Signal Connector 12 Way	Intercontec AEDC 106 MR 14 00 1216 000	
Rotatable	Pin	Description
	1	Excitation + High
	2	Excitation - Low
	4	Cos + High
	5	Cos - Low
	6	Sin + High
	7	Sin - Low
	11	KTY+ Thermistor
	12	KTY- Thermistor
	3,8,9 & 10	N/C



Connection Type: X-Power and Signal 90° rotatable (Size 1)

AMP FAN BOX CONNECTION:		
	1	N/C
	2	N/C
	3	N/C
	4	Neutral
	5	Live
	6	Earth



AMP Connector Manufacturer: TE Connectivity; P/N - 350715-1



AMP Connector pin Manufacturer: TE Connectivity; P/N - 350550-1

Mating Connector Manufacturer: TE Connectivity; P/N - 350781-1
 Mating Connector pin Manufacturer: TE Connectivity; P/N - 926894-1

